



RunDisk(RM-UR24) *ManagerX User's Guide*

Rev 2.41

RunDisk S/W Dev. Temp

Index

System Specifications	5
1. Installation of ManagerX	6
2. Using the ManagerX	8
2-1 Log-In / Log-Out	9
2-2 Change the password	10
2-3 Format Window	12
2-4 Disk Mode List	12
2-5 Boot Disk List	12

3. Disk Setting On Format

.....	13
3-1 To establish Normal Disk	15
3-2 To establish Security Disk	15
3-3 To make Bootable Disk	16

4. ManagerX Customization

4-1 Language Selection	17
4-2 Skin Selection	18
4-3 Additional Setting	19
4-3-1 Top-level windows	20
4-3-2 Auto-run function	20
4-3-3 Auto Start function	21
4-3-4 Other functions	22

5. Using the PassmanX

.....	23
5-1 Change the password	24
5-2 Log In	25

System Specification

- ManagerX system specification
 - CPU: Pentium III or above
 - RAM: 32Mbyte or above
 - Hard Disk: 10 MB or above
 - USB Host: USB 2.0, USB 1.1 or Add-on-card
- Operating system
 - Windows 98, 98SE, Millennium, 2000, XP
 - Linux: 2.4.0 later
 - MAC OS 9.x later

Multi-Disk Supported Windows 98/98SE, Millennium, 2000(SP3 later), XP and MAC OSX-10.15 later

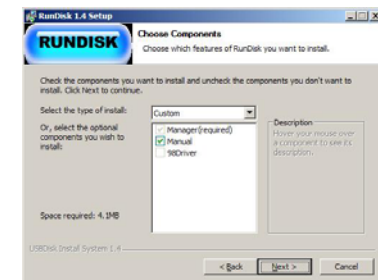
1. Setup the ManagerX

- 1). Execute Rundisk24-v213.exe file in CD-ROM.
(Rundisk24\ManagerX(v2.1.3)\)
- 2). Select a language to use when setup



- 3). Select components to setup

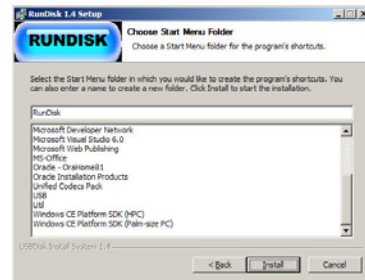
- The ManagerX must be installed to use various functions (default).
- Manual is optional for selection.
- .98Driver is only available for windows 98 user.



4) If it is needed to change folder to install, change folder as you want.



5) Change the folder name if you want to use other name in a start Menu folder

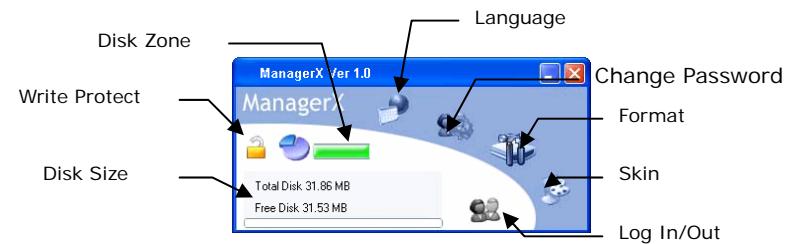


6) The installation is completed by clicking Finish button and the ManagerX will be executed automatically.



2. Using the ManagerX

After running the ManagerX program in the folder(C:\Program Files\rundisk24), the window appears as follows and shows information of the USB-Disk which are related with disk size and empty space, status of Write-protect switch etc. Also, It offers convenient functions to enjoy using the USB-Disk .

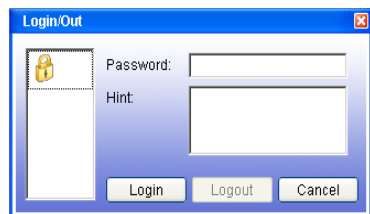


⚠ If the USB-Disk is not connected, ManagerX's window does not appear.

2-1. Log-In / Log-Out

* This is available only after partitioning security disk on Format window.

- Click Log-in icon(👤) on the ManagerX.
- Enter the password and click the Log-in button
- Reading and writing are available.



Once User is logged in, user have to click the Log-In icon(👤) to log out the ManagerX program.

2-2. Change a Password

* This is available only after partitioning security disk on a Format window.

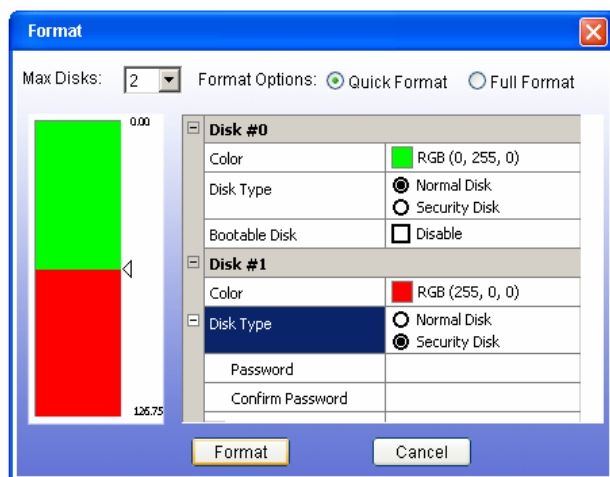
- By Clicking change-password icon(🔑) on the ManagerX, the window will appear.
- Enter the proper things to each box in accordance with table below.



Current Password	Current Password for security disk
New password	Enter the new Password
New password re-input	Enter the new password again to confirm it
Hint	In case User can't remember password afterward, Enter the hint that can remind user of the password.

2-3. Format Window

This window is to initialize a disk, make a booting disk, and a partition disk into a security disk or a Public disk.



2-4. Disk Mode on a Format window

Kind	Description
Public Area Mode	Writing and reading are available at all the time.
Security Area Mode	Only after Log-in, writing and reading are available.

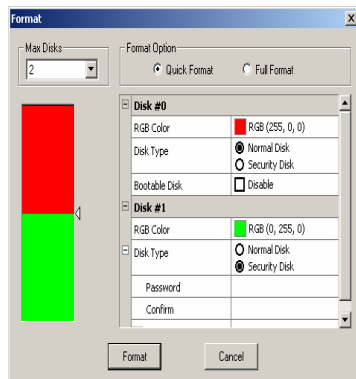
2-5. Kind of Boot-Disk

A booting disk is available only for Windows 98 system, and supports USB-ZIP and USB-HARD which are depending on each computer Bios.

3. Disk Setting on Format

Before using the ManagerX software, a USB drive must be connected.

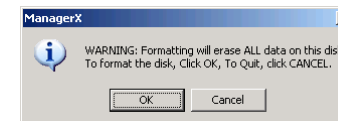
A Format window will be appeared by clicking Format icon on the ManagerX software.



- A. Select number of disk to use.
- B. Choose one of two format options in the Format Options box.
- C. Select size of disk to move slide-bar.
- D. Select kind of disk.
- E. Click the format button.

- ⚠ If click the format button the warning message appears like below.
All datas are erased if click 'OK' button.

We recommend you to back up the important data for the safety.



3-1. To establish Normal Disk


Select as below to establish normal disk.

RGB Color	 RGB (0, 255, 0)
Disk Type	<input checked="" type="radio"/> Normal Disk <input type="radio"/> Security Disk

3-2. To establish Security Disk


After select by security disk, input password and hint.

If do not input password, can not format the disk.

RGB Color	 RGB (0, 255, 0)
Disk Type	<input type="radio"/> Normal Disk <input checked="" type="radio"/> Security Disk
Password	
Confirm	
Hint	

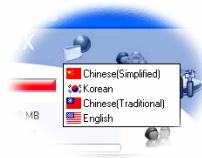
3-3. To make Bootable Disk

Bootable disk is possible in first disk and only in normal disk. Booting form is made by Windows98 booting disk and support 2 types of USB-ZIP and USB-HDD.

[-] Disk #0	
RGB Color	 RGB (255, 0, 0)
Disk Type	<input checked="" type="radio"/> Normal Disk <input type="radio"/> Security Disk
[-] Bootable Disk	<input checked="" type="checkbox"/> Enable
Bootable type	<input checked="" type="radio"/> USB ZIP <input type="radio"/> USB HDD

4. ManagerX Customization

4-1. Language selection

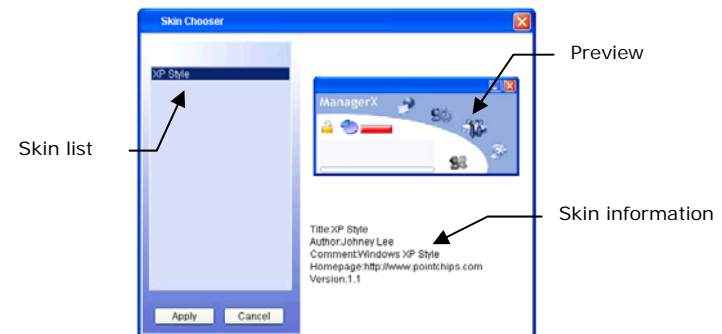


The ManagerX offers multi languages. This is the function that allows user to select languages.

Click The ManagerX's language icon() and select a language you want to use among languages that appear in language list box.

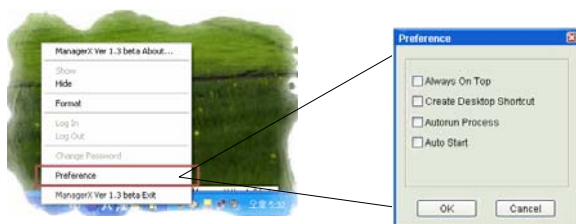
4-2. Skin selection

User can set the ManagerX's skin by clicking skin icon.



4-3. Additional Setting

When the program is launched, the ManagerX's icon appears on the tray .
This menu will be launched by positioning a cursor on the icon and clicking your right mouse.



4-3-1. Top-level Windows (Always on top)

This function is for wanting the ManagerX to be shown as a top screen always.

User can use function to run the ManagerX fast.

4-3-2. Create a Desktop Shortcut

This function is to create the ManagerX's shortcut icon on desktop.

4-3-3. Auto-run

When USB-Disk arrives in USB port , a specific file you want to show can be executed automatically.

The following steps explain how to set up the "auto-run function".

Autorun.inf file must be created in a text format by using a notepad program.

1) Make a autorun.inf file as follows.

```
[Autorun]
```

```
open=demo.ppt
```

2) Save a autorun.inf file and demo.ppt into your USB drive together.

⚠ a autorun.inf file and targeting file must be stored together in the USB-Disk.

4-3-4. Auto Start

When Windows begin, the ManagerX will always be executed automatically.

4-3-5. Other functions

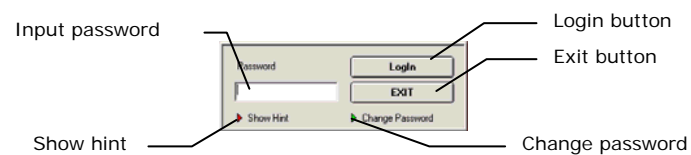
Popup Message

When the USB-Disk is connected or removed from USB port, it is to show message to user.



5. Using the PassmanX

The PassmanX will be created in security disk automatically after user make security disk, This program that allows user can change the password of a security disk or Log-in.



5-1 Change the Password

User can change the password on a Popup window below, by clicking the PassmanX's change password button(▶).

The process of "change password" is as follows.

A screenshot of the 'Change Password' popup window. It contains a 'Password' field with a red 'A' label, a 'Login' button, an 'EXIT' button, a 'Show Hint' button with a red arrow icon, and a 'Change Password' button with a green arrow icon. Below these is a 'New Password' section with a 'Confirm Password' field (labeled with a red 'B') and a 'Hint' field (labeled with a red 'C'). A 'Change Password' button (labeled with a red 'D') is also present in this section.

- A. Input the current password.
- B. Input the new password and confirm the password.
- C. Input a hint. Blank is available.
- D. Click the 'Change Password' button, the password will be changed.

⚠ Please keep your password in mind.

User must format the disk to Log-in in case of lose.

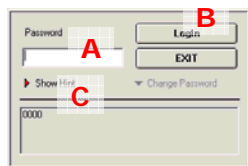
User should remove the "v" mark from "making security disk." to format disk.

5-2 Log In

This is the Menu for user to write or read data in a security disk.

Window is also available on the ManagerX Program.

The process of Log-in is as follows.



- A. Enter the password.
- B. Click the 'Login' button.
- C. In case User can not remember the password, User can get a hint you stored by clicking the hint button(▶).