

**ATV / ATV-TURBO / RALLY2**

**MP TOOL GUIDE**

OCZ Technology Group Inc.

September 2007

SLAVAA

1. Extract the rar file

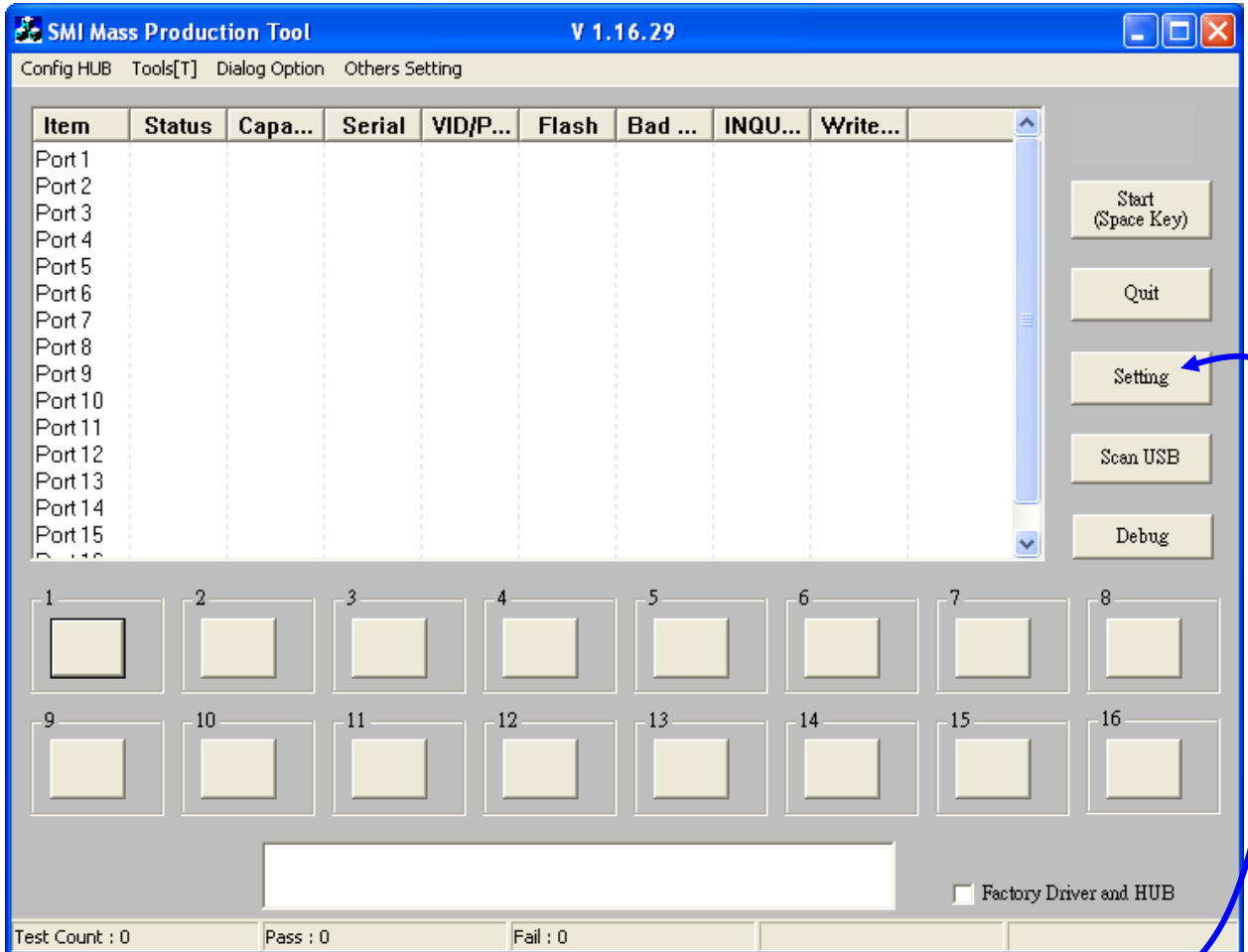


MP TOOL

2. Find the “sm32Xtest” file and double click it

sm32Xtest

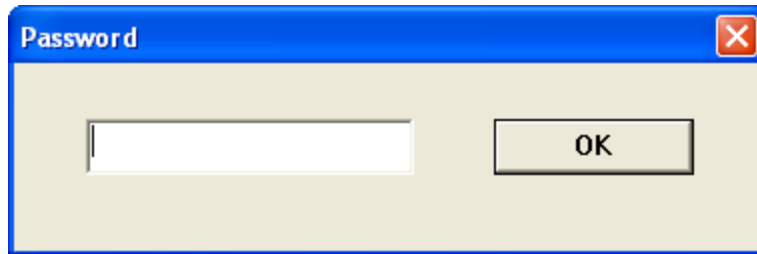
3. The following window will pop up.



4. Click Setting button  
Setting

5. Then, another small window will pop up (next page)

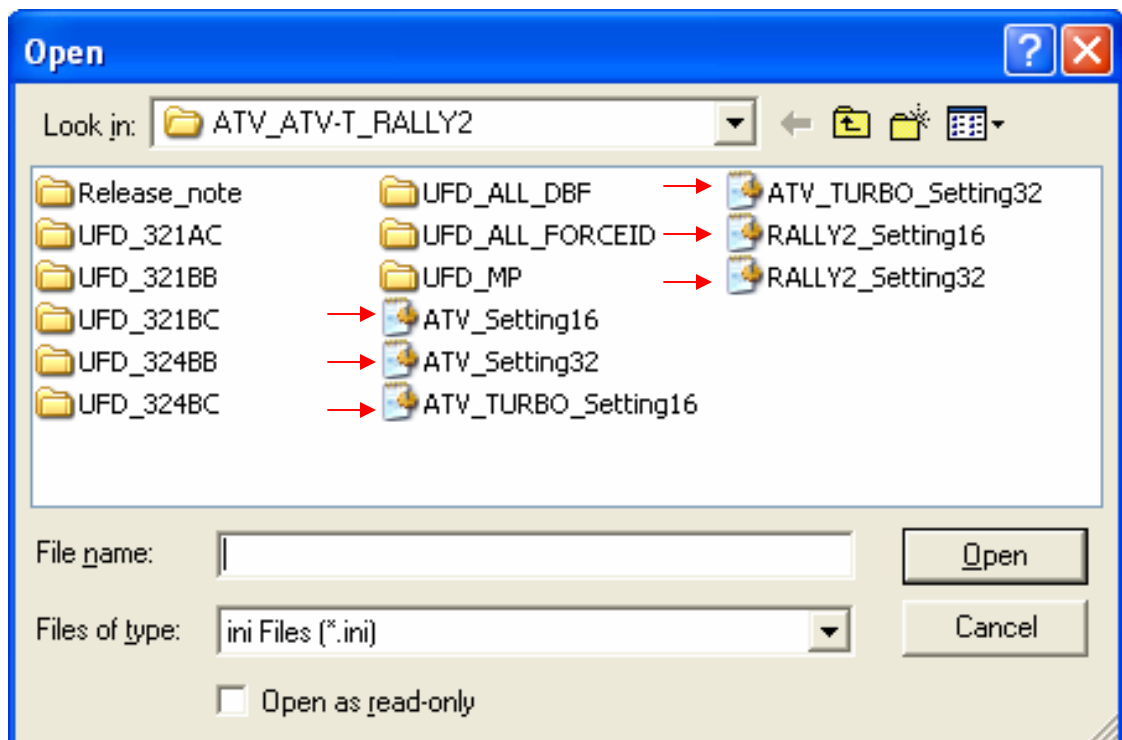
( )



6. Type "320" for password

320 OK

7. Then, another window will pop up as below



8. Choose one of 6 setting files for your USB Falsh Memroy Drive.  
And, click the Open button.

6

- ATV: 1 / 2GB
- ATV: 4 / 8 / 16 / 32GB
- ATV TURBO: 1 / 2GB
- ATV TURBO: 4 / 8 / 16GB
- RALLY2: 1 / 2GB
- RALLY2: 4 / 8 / 16 / 32GB

- Choose "ATV\_Setting16"
- Choose "ATV\_Setting32"
- Choose "ATV\_TURBO\_Setting16"
- Choose "ATV\_TURBO\_Setting32"
- Choose "RALLY2\_Setting16"
- Choose "RALLY2\_Setting32"

Open

9. The following window will pop up

10. Next, please click the “OK” Button

OK

ATV\_TURBO\_Setting32.ini

Mode: Memory Bar Serial Number: 16 Bytes SN Length: 16 Time Out: 10000 Save To File OK

USB

VID: 0324 PID: BC08 bcdDevice: 1100

Vendor Str: OCZ 20

Product Str: ATV\_TURBO 20

Begin Serial: AA04012700007434 16

End Serial: AA04012799999999 16

Serial Mask: AA##### 16

☐ Auto Date Mask

Mask Start Pos: 3 Hex Char: Mask End Pos: 10

Inquiry

Vendor: OCZ 8 USB Power: 100 mA

Product: ATV\_TURBO 16

Disk Type: USB-ZIP

Disk Size: NO Check

Total LBA: 0

Disk Label: ATV\_TURBO

Led Ready: 80

Led Busy: 24

USB Mode: Both

☐ Auto Capacity

☐ Specific Application Support

SM321AC

☐ AGAND

☐ NR

☐ SPECTEK

SM321BB

☒ NR

☐ SPECTEK

☐ HalfSize

SM324BB

☐ HalfSize

☐ -R

SM324BC

☐ HalfSize

Select TEST ITEM

☒ Pretest No Erase Bad Erase Good Block

☐ Select PTest D:\2007-04-24\_Ver-01\JFD\_3

Bad Block: 20 SLC: 20 2.0% MLC: 44 4.3%

☒ Write CID DBF Method: High Performance

☒ Download ISP

☐ Select ISP

☒ Copy Test 0% 100% 2% Set

☐ Make Auto Run D:\ACT\_PROJECT\MPtool\2007

☐ CDROM Only

☒ Format ☒ To FAT32

☐ Preload

☒ FAT

☐ Non FAT

☐ Disk Read Only ☐ Test Result LED Flash

☐ DBF,ISP and Pretest Files Mixing Support

File Path:

☐ Enable Turn off MU

☐ Turn off upper half MU(s).

☐ Turn off bottom half MU(s).

☒ Turn off Specific MU(s).

☐ Automatic Turn off MU(s).

Set 0

11. Returning to the MP TOOL main menu, please click “Scan USB”

MP TOOL, Scan USB

12. Wait until it scans the USB port.

\* You need to plug in your USB Flash Drive before the 11<sup>th</sup> step.

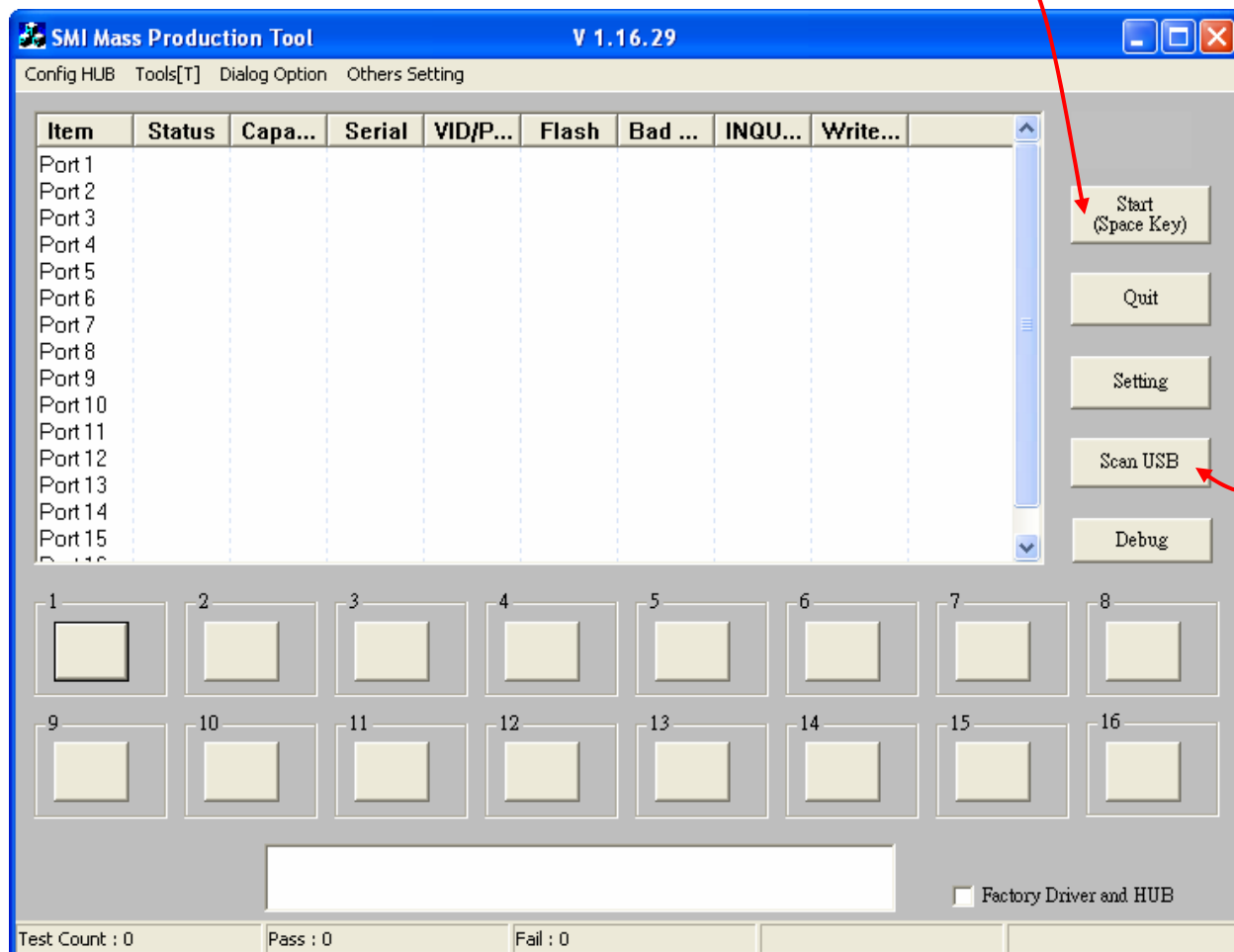
USB

\*

11

13. Click the “Start” Button.

Start ( " " )



14. Wait for the completion. At completion, Green “OK” will pop up  
"OK"

15. Click the “Quit” button and Plug out your USB Flash Drive.  
"Quit"

16. As a final step, re-plug your drive and confirm its function.

Thank you very much

( . ?)